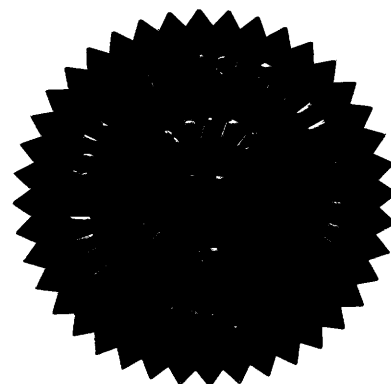


MINUTES

**UNIVERSITY OF SOUTHERN INDIANA
BOARD OF TRUSTEES**

September 6, 2001



MINUTES

UNIVERSITY OF SOUTHERN INDIANA BOARD OF TRUSTEES

September 6, 2001

The University of Southern Indiana Board of Trustees met in regular session on Thursday, September 6, 2001, in the Multipurpose Room of Governors Hall. Present were Trustees Bruce Baker, Louise Bruce, Patrick Hoehn, David Huber, Walter Jermakowicz, Tom McKenna, Tina Kern, Harolyn Torain, and James Will Sr. Also attending were President H. Ray Hoops, Vice Presidents John Byrd, Robert Reid, Richard Schmidt, and Sherrienne Standley; Faculty Senate Chair Wayne Rinks; and Student Government Association President Rick Hudson.

There being a quorum present, the meeting was called to order at 1:00 p.m.

SECTION I - GENERAL AND ACADEMIC MATTERS

A. APPROVAL OF MINUTES OF JULY 2, 2001, MEETING

On a motion by Mr. Huber, seconded by Mrs. Torain, the minutes of the July 2, 2001, meeting were approved.

B. ESTABLISHMENT OF NEXT MEETING DATE, TIME, LOCATION

The next regular meeting of the Board of Trustees was set for Thursday, November 1, 2001, on campus.

C. PRESIDENT'S REPORT

President Hoops began his report by welcoming the new student Trustee, Walter Jermakowicz, and the Faculty Senate chair, Wayne Rinks, to their first board meeting.

He noted that he was happy to welcome the Trustees back to campus in the midst of the University's busiest time. He reported that the reason for meeting in Governors Hall is that all the other meeting space on campus was occupied, and noted that the first few weeks of the fall semester are always a challenge in terms of space for parking, meetings, classes, and extracurricular activities. He expressed appreciation for the patience and understanding of the students and faculty and assured the Trustees that these problems will ease as schedules are refined.

President Hoops reported on several construction projects in addition to the update scheduled later in the agenda. A major renovation project in the University Center was completed this summer, adding vital space for expanded food service – both in terms of seating capacity and food preparation space – and also for the Bookstore. The renovations helped make gains in our efforts for compliance with the Americans with Disabilities Act as well. Several offices were moved to accommodate the expansion, and the President expressed appreciation to the staff whose cooperation made the relocation go so smoothly. He noted that this is the first stage of expansion to the University Center with planning already beginning for another major expansion in the future. Another major project, he reported, is the re-routing of the campus roadway on the west side of campus to make way for the new Science and Education Center. It is hoped that project will be complete in October, at about the same time the new overflow parking in the valley is complete. All these developments help the University to respond to enrollment growth and the changing campus landscape.

The President reported that at the fall meetings for faculty, administrators, and support staff, 78 new employees, who have joined the University since last spring's meeting, were welcomed. A program was presented on employee awareness of sexual harassment issues and to familiarize employees with USI's policy. The goal is to be proactive in offering educational programs to familiarize employees with issues, hoping ultimately to avoid problems.

The faculty also heard from Dr. R. Eugene Rice, director of the Forum on Faculty Roles and Rewards, at the American Association for Higher Education. Dr. Hoops noted that it is always encouraging to hear from national experts about emerging national trends and to reflect on how USI manages to always be ahead of the curve. It makes the University proud of its efforts and the balance it enjoys in shared governance.

The President was pleased to announce that the first winner of the H. Lee Cooper Core Curriculum Teaching Award was announced at the fall faculty meeting. The award went to Craig McCarron, instructor in mathematics, who was nominated by the associate chair of his department, who said that his creative teaching techniques enable him to make mathematical converts of even the least suspecting of his students. The award focuses exclusively on teaching and honors a faculty member whose work in University Core courses has been creative and successful in furthering the goals of the UCC. Mr. McCarron, a graduate of Princeton University and Harvard, joined the faculty full-time in 1997. He will receive a \$1,500 stipend plus additional money to support travel, professional development, or classroom needs.

President Hoops also congratulated Cindy Bippus, USI's Volunteer of the Year. She was recognized at the annual Volunteer Services Recognition Program along with 320 volunteers who have accumulated 20 or more service hours during the year. Since Volunteer USI began in 1996, more than 2,300 volunteers have given 366,999 hours of service to the University. Calculated at the average University wage, that amounts to more than \$6 million.

Dr. Hoops called on Vice President Byrd to report on the official enrollment figures for the fall semester. Dr. Byrd began by thanking many on the University staff for the team effort that resulted in the positive enrollment report. He reported that enrollment has increased by 350 students and 3.9 percent overall since last year. Freshman enrollment is up 154 students (8.2 percent). There is a 65 percent increase in graduate students enrolling for the first time. The number of enrolled students ages 25 and older increased by 117 (5.6 percent).

President Hoops asked Dr. Byrd to tell the Board about the new Eagle Leaders program. Dr. Byrd reported that a group of sophomore leaders from campus organizations formed the first Eagle Leaders, a group devoted to involving freshmen in campus organizations and activities. The Eagle Leaders not only mentor freshmen, they also recruit freshman students to become future Eagle Leaders.

The President reported that the Student Affairs staff had a busy summer with orientation programs and getting students off to a good start in the semester. More than 1,500 students, family members, and USI faculty, staff, and student leaders were in attendance at the opening convocation and indoor picnic. Several other events during Connections II were aimed at preparing entering students to be successful in their transition to college. The first annual Labor Day Extravaganza offered various events for students during the entire Labor Day weekend – picnics, dances, lake outings – and drew the participation of hundreds. One of the activities was the participation by the Eagle Leaders in the Jerry Lewis Telethon. USI had 22 students who volunteered to staff telephones for the local effort.

The University Core Curriculum Council is sponsoring a lecture series focusing on "Encountering Nature." Dr. Hoops reported that the first speaker will be Tim Cahill, founding editor of *Outside* magazine and author of eight books focusing on travel and the environment. The series will run throughout the entire academic year, highlighting people who can show, from different perspectives and experiences, what it means for them to "encounter nature."

The President called on Rick Hudson for a report from the Student Government Association. Mr. Hudson reported that the kick-off event for the semester, the New Student Welcome Dinner, was attended by more than 500 students. He noted that he is pleased with student feedback this semester and that SGA is reacting to student suggestions. He also reported that SGA has developed a grant program that will provide support for student organizations planning events or activities that will enhance student life. The Student Organization Support Grant is one of three grant programs administered by SGA. The others are designated for student travel and athletic programming.

President Hoops reported that the USI Children's Center will begin two new programs this month. The program for two-year-olds is full with ten students and has generated a waiting list. Fifteen students are enrolled in a new morning preschool program which alternates each day with a traditional Head Start program. These new programs are possible because space was converted in the former theatre office building nearby. The space also will be used to house other children's programs during summers and holiday periods.

He noted that Extended Services reports that its Organizational and Professional Development Group has received a major contract to provide in-house training for employees of Inland Container. The OPD Group customized a 52-hour training program for 130 salaried and hourly employees at each of the company's locations in Evansville, Louisville, and Middletown, Ohio. The training in communication and group leadership skills is part of the company's strategy to move to a self-directed work team environment.

Dr. Hoops was pleased to report that more than 60 people participated in the Indianapolis Alumni Chapter Golf Scramble this year. Several alumni and Varsity Club members traveled from Evansville to join the Indianapolis-area golfers. He noted that Board Chair Jim Will was among those participating and that his foursome captured top honors.

The USI Foundation closed its books for the 2000-2001 fiscal year with exceptional results. The President reported that total gifts and pledges topped \$7.1 million from more than 4,800 donors, close behind the \$7.4 million and \$8 million in charitable gifts received during Campaign USI's peak years. Donors to the Annual Fund contributed \$276,033, setting a new record of nearly \$40,000 more than last year's total, an increase of 17 percent.

He also reported that, as the Foundation's fiscal year was closed out, it was possible to make distributions from Campaign USI restricted and unrestricted accounts. Many donors are completing their pledges this year, making possible these distributions, which come at a critical time for USI in view of its lighter legislative appropriation. Each academic school now has its own Faculty Enhancement Endowment Fund, and faculty from all schools have access to a University-wide endowment fund. The University is able to add high-tech audio-visual equipment in some of the campus buildings; and the Broadway recreation fields will be receiving funding for lighting, making the fields useful at later hours. The impact of the campaign is being felt throughout the University.

The President called on Vice President Reid, who introduced Dr. Iain Crawford, dean of the School of Liberal Arts, to present a report on the theatre program. Dean Crawford reported first on Lincoln Amphitheatre, where total attendance, average nightly attendance, and ticket revenue were significantly increased over last season, and noted that he expects a balanced budget or a greatly reduced deficit in 2001. He reported that his concerns include sound engineering, set design and construction, and the fact that Young Abe Lincoln is an aging show. He reported that Lincoln Amphitheatre will continue to expand its offerings and that plans are underway to revamp the facility's gift shop.

Dean Crawford reported that despite the excellent operation, talent, media support, and artistic and technical caliber of all three shows, The New Harmony Theatre had a disappointing season. Overall, sales were 14 percent below the 2000 season. He announced that next year's season has been adjusted with an eye to commercial viability and will include productions of *Private Lives*, *Anna Christie*, and *Pump Boys and Dinettes*. Dr. Crawford noted that these shows, with slightly smaller casts, will allow for a shift of funds from actor contracts into marketing.

Dean Crawford continued with a report on recent changes in the USI Theatre program. He explained that the fine and performing arts have been combined in one department that includes theatre, art, and music. This restructuring offers opportunities for the three areas to increase their collaboration. The new department, Dean Crawford reported, has a chair from Art and program coordinators for the other two areas. The Associate Dean of the School of Liberal Arts has a special responsibility for working with the department.

The dean concluded his report with an announcement about the upcoming American College Theatre Festival to be hosted by the University of Southern Indiana in January, 2002. The festival, which will include productions from many college and university theatres, will be held January 9-12, 2002 at The Centre and The Executive Inn.

In closing his report, President Hoops thanked Board Chair Jim Will and his wife Eileen for hosting the trustees again this year for the Board Retreat at Lake Barkley.

SECTION II – FINANCIAL MATTERS

A. REPORT OF THE CONSTRUCTION COMMITTEE

Dr. Ruble reported that the Construction Committee met on August 3, 2001, to review construction bids for the Science and Education Center. The committee approved bids for the construction of the building and approved the construction of the basement bid as Alternate No. 1.

B. REPORT OF THE FINANCE COMMITTEE

Dr. Ruble reported that at its meeting on August 3, 2001, the Finance Committee selected Banc One Capital Markets, Inc. as the investment banker for the Science and Education Center, and approved the following recommendations:

1. That the University issue fixed-rate bonds for the project.
2. That bond insurance be purchased as a credit enhancement tool.
3. That, pending State approval and financial proof, the University consider refunding existing fee replacement fixed-rate debt.
4. That Old National Trust Company be selected as bond trustee.
5. That the University, pending State approval, pursue an aggressive issuance schedule and plan to issue bonds by late November or early December, 2001.
6. That the selected investment banker should be requested to establish a marketing plan that will include local involvement of the retail sales of the bonds.

C. REVIEW AND APPROVAL OF ALTERNATE BIDS RECEIVED FOR THE SCIENCE AND EDUCATION CENTER AND MISCELLANEOUS IMPROVEMENTS PROJECTS

Bryan Carr and Ed Hafer of Edmund L. Hafer and Associates presented a report on the recommended alternate bids for the Science and Education Center Project and the Miscellaneous Improvements Related to the Construction of the Science and Education Center Project.

At its meeting on August 3, 2001, the Construction Committee approved bids for the construction of the Science and Education Center and approved the construction of the basement bid as Alternate No. 1. The staff and design team have reviewed the remaining alternate bids and recommend approval of the alternates described in Exhibit II-A. Approved alternate bids will be change orders to the construction contracts.

On a motion by Mr. McKenna, seconded by Ms. Kern, the alternate bids for the Science and Education Center and Miscellaneous Improvements projects, described in Exhibit II-A, were approved.

D. APPROVAL OF CHANGE ORDERS FOR MISCELLANEOUS IMPROVEMENTS RELATED TO THE SCIENCE AND EDUCATION CENTER PROJECT

On a motion by Mr. Hoehn, seconded by Ms. Kern, the change orders listed in Exhibit II-B were approved.

E. REVIEW AND APPROVAL OF PROCEDURES RELATED TO CHANGES IN CONSTRUCTION CONTRACTS

Mr. Schmidt presented a proposed policy related to the approval of change orders to construction contracts. On a motion by Mr. McKenna, seconded by Mr. Huber, the Procedures Related to Changes in Construction Contracts in Exhibit II-C were approved.

5. The Chair, the Vice Chair, and the Treasurer are hereby authorized to execute and deliver any financing documents, agreements, and certificates, etc., as may be necessary or appropriate for the financing or financings of the Project and the possible refunding of the Prior Bonds through the issuance of one or more series of bonds, subject to the further approvals required from the Finance Committee under paragraphs 3 and 4 above.
6. The University hereby declares and reaffirms its official intent to acquire, construct, equip, and/or rehabilitate the Project described in Exhibit II-D; to reimburse certain costs of acquiring, constructing, equipping, and/or rehabilitating the Project with proceeds of debt to be incurred by the University; and to issue debt not exceeding \$26,500,000 in aggregate principal amount for purposes of financing, refinancing, or reimbursing costs of the Project.

G. APPROVAL OF REQUEST FOR GENERAL REPAIR AND REHABILITATION FUNDS

This request authorizes President Hoops to request approval of the Indiana Commission for Higher Education, the State Budget Committee, and the Governor of the State of Indiana for appropriation of general repair and rehabilitation funds for the project listed in Exhibit II-E.

On a motion by Mr. Jermakowicz, seconded by Mrs. Bruce, the funding authorization request for repair and rehabilitation funds in Exhibit II-E was approved.

H. UPDATE ON CURRENT CONSTRUCTION PROJECTS

Mr. Helfrich reported that several projects were completed on schedule prior to the beginning of the fall semester, including the renovation of the lower level of the Forum Wing of the Wright Administration Building; the expansion of the Eagles Nest and bookstore in the University Center; and the rehabilitation of the Gray Building in the McDonald East apartment complex. He noted that the state Department of Transportation paved much of Parking Lots A, B, and C this summer. He also reported on several smaller renovation projects that are underway, including the expansion of the Children's Center and the renovation of the former radio and TV labs in the Technology Center into Art Department labs, offices, and a classroom. Mr. Helfrich concluded his update by reporting that the miscellaneous improvements project associated with the Science and Education Center is 75 percent complete and that work on the Science and Education Classroom Building has begun.

I. APPROVAL OF RECOMMENDATION TO TRANSFER ADDITIONAL FUNDS TO THE VEBA (VOLUNTARY EMPLOYEES' BENEFIT ASSOCIATION) TRUST ACCOUNT

The VEBA Trust Investment Policy requires the approval of the Board of Trustees for a transfer of additional funds to the VEBA Trust accounts.

On a motion by Ms. Kern, seconded by Mrs. Bruce, a transfer of \$125,000 to the VEBA Trust sub account at Fifth Third Bank in October, 2001, was approved.

J. APPROVAL OF BUDGET APPROPRIATIONS, ADJUSTMENTS, AND TRANSFERS FOR FISCAL YEAR 2000-2001

On a motion by Mr. McKenna, seconded by Ms. Kern, the Budget Appropriations, Adjustments, and Transfers for fiscal year 2000-2001 in Exhibit II-F were approved.

K. APPROVAL OF BUDGET APPROPRIATIONS, ADJUSTMENTS, AND TRANSFERS FOR FISCAL YEAR 2001-2002

On a motion by Mr. Baker, seconded by Mr. Hoehn, the Budget Appropriations, Adjustments, and Transfers for fiscal year 2001-2002 in Exhibit II-G were approved.

SECTION III - PERSONNEL MATTERS


A. APPROVAL OF PERSONNEL ACTION

On a motion by Mr. Baker, seconded by Mrs. Torain, the following personnel action was approved.

1. Retirement and Emeritus Status. Rule of 85 Retirement: Richard W. Schmidt, Vice President for Business Affairs and Treasurer, in accordance with the rule of 85 retirement policy, has requested retirement effective June 30, 2002. Based on Mr. Schmidt's 30 years of service to the University, it is further recommended that the title of Vice President Emeritus for Business Affairs and Treasurer Emeritus be conferred effective June 30, 2002.

There being no further business, the meeting adjourned at 2:40 p.m.

Respectfully submitted,


Louise Bruce
Secretary

UNIVERSITY OF SOUTHERN INDIANA

Science and Education Center and Miscellaneous Improvements Projects

Recommended Alternates

ALTERNATES – Science and Education Center Project:

2a)	Finish Science Shell Spaces	\$255,283
2c)	Finish Lecture Hall Shell Spaces *	272,005
2d)	Finish Shared Teaching Lab Rooms 2232 and 2233 Shell Spaces	161,159
2e)	Finish Computer Lab 2111 Shell Space	26,391
2f)	Finish General Classroom 2103 Shell Space	15,303
2g)	Finish Education/Tech Room 2117 Shell Space	35,549
2h)	Finish Classrooms 3145 and 3147 and Prep Room 3146 Shell Space	76,511
2i)	Finish Math Lab 3203 and Prep 3203a Shell Space	58,104
5)	Provide Chair Rails in Specified Rooms	31,925
6)	Provide Dimming Capability in Specified Rooms	60,000

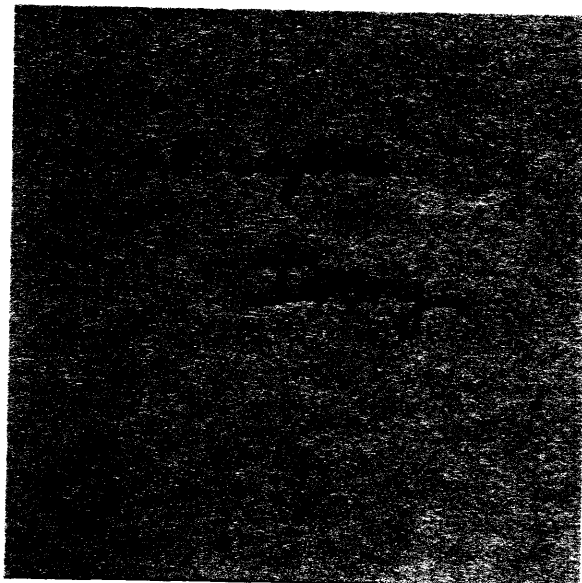
TOTAL **\$992,230**

ALTERNATES – Miscellaneous Improvements Project:

2a)	Service Drive from Security Building to Forum Wing	\$143,820
2b)	Walkway from Physical Plant to Security Building	66,230

TOTAL **\$210,050**

* \$200,000 of this amount will be funded from other sources



**UNIVERSITY OF SOUTHERN INDIANA
MISCELLANEOUS IMPROVEMENTS PROJECT
SUMMARY OF CHANGE ORDERS**

SEPTEMBER 6, 2001

CHANGE ORDER NUMBER	DESCRIPTION	CONTRACTOR	PROPOSAL AMOUNT
1.1	Make water service connection to system after normal working hours	Peyronnin Construction Co.	\$1,244.00
2.1	Revise storm sewer piping headwall design near Publishing Services Center	Deig Brothers Lumber and Construction Co.	\$3,376.00
2.2	Install new 3-inch diameter gas line and connect to service meter and line to Science Center	Deig Brothers Lumber and Construction Co.	\$4,378.00
2.3	Dredge silt from finger of Reflection Lake near Publishing Services Center	Deig Brothers Lumber and Construction Co.	\$8,848.44
3.1	Change lighting type and install weather-tight electrical enclosure for aerator system	Key Construction Co.	\$3,546.00
3.2	Dredge silt from Reflection Lake near dam	Key Construction Co.	\$8,800.00
	TOTAL AMOUNT OF CHANGE:		\$30,192.44

Procedures Related to Changes in Construction Contracts

1. Change orders up to \$25,000 may be issued by the Vice President for Business Affairs and reported to the Board of Trustees at its next meeting.
2. Change orders over \$25,000 that require immediate action will be described to all Construction Committee members (generally by email). After any concerns have been resolved, the Vice President for Business Affairs will issue the change order and report to the Board of Trustees at its next meeting.
3. All other change orders will be reviewed with the Construction Committee at its next meeting. Following approval of the committee, the change order will be issued and reported to the Board of Trustees at its next meeting.

In all cases, the Trustees will continue to review all change orders that the Vice President for Business Affairs may have issued on their behalf.

PROJECT DESCRIPTION

Science and Education Center – The primary purpose of the Science and Education Center is to provide general and specialized classrooms, computer, multi-media, and teaching/research laboratories for the Pott School of Science and Engineering Technology and the Bower-Suhrheinrich School of Education and Human Services. The building also will provide specialized facilities and service areas for the University Division and Academic Skills.

University of Southern Indiana
Request for General Repair and Rehabilitation Funds
September 6, 2001

Replace sealant in joints of exterior porcelain panels on The Atheneum in New Harmony	\$70,000
Renovate Forum II lecture hall in Wright Administration Building	150,000
Renovate Forum I and III lecture halls in Wright Administration Building	300,000
Upgrade exterior site lighting fixtures on campus- Phase II	50,000
Make improvements to Reflection Lake- Phase II	70,000
Replace main circulating pumps for high temperature heating water system in central heating plant	68,000
Renovate Orr Center restrooms to provide wheelchair access	75,000
Replace and repair Orr Center wall and floor finishes	85,376
Total Estimated Cost	\$868,376

BUDGET APPROPRIATIONS, ADJUSTMENTS, AND TRANSFERS FOR 2000-01

1. Additional Appropriation of Income

From:	Unappropriated Current Operating Funds		
To:	1-10102	College Achievement Program Supplies and Expense	1,488
To:	1-10150	Arts Commission General Personal Services Supplies and Expense	100 2,315
To:	1-10160	Mid-America Singers Supplies and Expense	21,688
To:	1-10170	USI Theatre Supplies and Expense Supplies and Expense	9,889 33
To:	1-10190	WSWI Supplies and Expense	6,800
To:	1-10195	Southern Indiana Review Supplies and Expense	4,084
To:	1-10200	School of Liberal Arts Supplies and Expense Personal Services	12,469 26,600
To:	1-10210	Art and Music Supplies and Expense	685
To:	1-10213	Art Education Supplies and Expense	2,380
To:	1-10220	Communications Department Supplies and Expense	1,280
To:	1-10251	Communal Studies Supplies and Expense	130
To:	1-10310	Biology Department Supplies and Expense	1,100
To:	1-10320	Engineering Technology Supplies and Expense	827
To:	1-10340	Chemistry Department Supplies and Expense	16,270
To:	1-10400	School of Nursing and Health Professions Supplies and Expense	7,178
To:	1-10450	Dental Clinic Supplies and Expense	10,219
To:	1-10700	School of Business Supplies and Expense Capital Outlay Personal Services	6,988 50 27,050

To:	1-10740	Information Systems and Business Education Supplies and Expense Personal Services	3,408 3,125
To:	1-10750	Economics and Finance Personal Services	6,250
To:	1-10800	School of Education and Human Services Personal Services Supplies and Expense	25,468 1,989
To:	1-10820	Social Work Supplies and Expense	3,510
To:	1-10830	Physical Education Supplies and Expense	152
To:	1-10840	Teacher Education Personal Services	1,755
To:	1-10940	Distance Education Personal Services Supplies and Expense	372 6,148
To:	1-13200	Library Personal Services Capital Outlay	500 5,767
To:	1-14002	Registrar Office Supplies and Expense	350
To:	1-14006	Student Life Capital Outlay	1,132
To:	1-14101	Intramurals and Recreational Sports Supplies and Expense	16,161
To:	1-15000	Physical Plant Personal Services Supplies and Expense	216 368,882
To:	1-16220	University Advancement Capital Outlay	204
To:	1-16221	Art Committee Supplies and Expense	5,861
To:	1-16230	News and Information Services Personal Services Supplies and Expense	11,350 4,982
To:	1-16300	Publications Supplies and Expense	61,494
To:	1-16301	Duplicating Services Supplies and Expense	239,999
To:	1-16302	Copy Center Services Supplies and Expense	160,706

To:	1-16303	Graphic Design Supplies and Expense	69,771
To:	1-16305	Color Copying Services Supplies and Expense	27,769
To:	1-16400	Development Personal Services Supplies and Expense Capital Outlay	2,921 9,530 2,361
To:	1-19999	Current Operating Transfers Out Supplies and Expense	433,434
From:	Unappropriated Designated Funds		
To:	2-20000	Student Services Fee Supplies and Expense	112,261
To:	2-20100	Student Programs Supplies and Expense	26,163
To:	2-20180	Student/Faculty Honors Symposium Supplies and Expense	1,550
To:	2-20300	Student Government Supplies and Expense	5,138
To:	2-20400	Student Publications Supplies and Expense	6,448
To:	2-20500	The Shield Supplies and Expense	448
To:	2-20600	Transitions Yearbook Supplies and Expense	67
To:	2-20660	Career Camp Supplies and Expense	10,932
To:	2-20760	International Programs Supplies and Expense	1,649
To:	2-21000	Instructional Facility Fees Supplies and Expense	99,311
To:	2-21050	Parking Facility Fees Supplies and Expense	64,571
To:	2-21100	Campus Service Fee Supplies and Expense	5,244
To:	2-22350	Extended Services Organization/Professional Development Supplies and Expense	123,196
To:	2-22500	Corporate Training Program Supplies and Expense	36,894
To:	2-23000	General Instruction Revolving Fund Supplies and Expense	2,983

To:	2-23100	Faculty Development Travel Supplies and Expense	27,843
To:	2-23130	Faculty Enhancement – Science and Engineering Technology Supplies and Expense	16,572
To:	2-23180	Faculty Enhancement – Education Personal Services Supplies and Expense	4,717 6,528
To:	2-23200	Occupational Therapy Professional Practice Unit Supplies and Expense	234
To:	2-23210	Nursing and Health Professions Professional Practice Unit Supplies and Expense	1,613
To:	2-23220	Anticoagulant Practice Unit Supplies and Expense	79,994
To:	2-23230	Dental Professional Practice Unit Supplies and Expense	13,245
To:	2-23240	Case Management Professional Practice Unit Supplies and Expense	6,550
To:	2-23250	Lipid Management Professional Practice Unit Supplies and Expense	7,735
To:	2-23300	School of Business Revolving Fund Supplies and Expense	5,975
To:	2-23305	Center for Business and Economic Research Supplies and Expense	2,311
To:	2-24001	Procurement Chargebacks Supplies and Expense	57,015
To:	2-24600	Employee Benefits Refund Revolving Supplies and Expense	30,457
To:	2-25000	Faculty Research Fund Supplies and Expense	4281
To:	2-26103	Faculty Enhancement Collins Supplies and Expenses	2010
To:	2-27147	Student Faculty Research Barnett Supplies and Expenses	181
From:	Unappropriated Auxiliary Funds		
To:	3-30200	University Center Supplies and Expense	131,997
To:	3-30202	Conference Services Supplies and Expense	84,404
To:	3-30205	University Special Events Personal Services	50
To:	3-30210	Campus Card Office Supplies and Expense	314,264

To:	3-30215	Drink Vending Supplies and Expense	7,881
To:	3-30300	University Licensing Supplies and Expense	1,558
To:	3-30500	Bookstore Supplies and Expense	937,716
To:	3-30600	Athletics Supplies and Expense	50,830
To:	3-30602	Baseball Supplies and Expense	15,526
To:	3-30603	Men's Tennis Supplies and Expense	1,377
To:	3-30605	Women's Basketball Supplies and Expense	9,750
To:	3-30606	Men's Basketball Supplies and Expense	4,400
To:	3-30607	Softball Supplies and Expense	6,285
To:	3-30608	Men's Golf Supplies and Expense	817
To:	3-30609	Men's Cross Country Supplies and Expense	13,991
To:	3-30610	Men's Soccer Supplies and Expense	6,301
To:	3-30611	Volleyball Supplies and Expense	1,293
To:	3-30613	Sports Medicine Supplies and Expense	538
To:	3-30615	Women's Cross Country Supplies and Expense	5,707
To:	3-30617	Women's Golf Supplies and Expense	290
To:	3-30620	Women's Soccer Supplies and Expense	16,002
To:	3-30702	Baseball Grant-in-Aid Supplies and Expense	4,234
To:	3-30704	Women's Tennis Grant-in-Aid Supplies and Expense	2,230
To:	3-30705	Women's Basketball Grant-in-Aid Supplies and Expense	3,000

To:	3-30706	Men's Basketball Grant-in-Aid Supplies and Expense	3,000
To:	3-30707	Softball Grant-in-Aid Supplies and Expense	486
To:	3-30708	Men's Golf Grant-in-Aid Supplies and Expense	680
To:	3-30805	School Age Program Personal Services Supplies and Expense Capital Outlay	1,201 3,686 1,845
To:	3-30810	Kindergarten Camp Supplies and Expense	4,902
To:	3-30815	Teenage Camp Supplies and Expense	893
To:	3-30900	New Harmony Operations Supplies and Expense	69,506
To:	3-30920	New Harmony Tours Supplies and Expense	200
To:	3-30940	New Harmony Guest House Supplies and Expense	2,538
To:	3-31020	Summer Refurbishing Personal Services	72,266
To:	3-32000	Lincoln Amphitheatre Personal Services Capital Outlay	6,400 595
To:	3-33130	McDonald Rent Supplies and Expense	40
To:	3-33170	McDonald III Housing Supplies and Expense	274,188
To:	3-33180	Newman Hall Supplies and Expense Repair and Maintenance	765,584 8,804
To:	3-33200	McDonald Damage Revenue Repair and Maintenance	37,750
To:	3-33400	McDonald Activity Supplies and Expense	729
To:	3-33500	O'Daniel Apartments Supplies and Expense Repair and Maintenance	12,083 14,428
To:	3-33900	Residence Life Services Supplies and Expense	598,100
To:	3-33950	Golden Towers Supplies and Expense	79,396

To:	3-34500	Miscellaneous Furnishings Supplies and Expense	2,627
To:	3-35000	New Harmony Theatre Personal Services Supplies and Expense Repairs and Maintenance	66,217 79,946 151
To:	3-35000	New Harmony Theatre Supplies and Expense	79,946
To:	3-36000	University Fitness Center Personal Services Supplies and Expense	11,161 43,779
To:	3-36001	Wellness Center Supplies and Expense	845,440
To:	3-39000	Theatre Management Supplies and Expense	98,735
From:	Unappropriated Restricted Funds		
To:	4-45004	College Work Study Personal Services	31,338
To:	4-45005	College Work Study Job Locator Supplies and Expenses	28,668
To:	4-45008	College Work Study America Reads Program Personal Services	9,161
To:	4-45009	College Work Study Contractor Agreement Personal Services	30,199
To:	4-45012	Indiana Minority Teacher Scholarship Supplies and Expenses	8,000
To:	4-45013	Indiana State Higher Education Grant Awards Program Supplies and Expense	1,904,268
To:	4-45014	State Scholarships Supplies and Expense	9,500
To:	4-45015	Robert Byrd Scholarship Supplies and Expense	1,500
To:	4-45016	State Nursing Scholarship Supplies and Expense	19,000
To:	4-45017	21 st Century Scholarship Supplies and Expense	351,206
To:	4-45021	National Guard Supplemental Grant Supplies and Expense	38,569
To:	4-45101	State College Work Study Supplies and Expense	1,976
To:	4-46415	Center for Community Healthcare Supplies and Expense	2,687

To:	4-46268	Scripps-Howard Electronic Classroom Supplies and Expense	1744
To:	4-46359	Indiana Academy of Science-Leaf Extract Supplies and Expense	454
To:	4-46360	Council on Undergraduate Research-Cancer Research Supplies and Expense	1400

2. Additional Appropriation of Reserve Funds

From:	Unappropriated Current Operating Reserves		
To:	1-10170	USI Theatre Supplies and Expense	1,703
To:	1-10195	Southern Indiana Review Supplies and Expense	904
To:	1-13200	Library Capital Outlay	12,000
To:	1-14005	Career Services Capital Outlay	500
From:	Unappropriated Plant Reserves		
To:	1-15000	Physical Plant Capital Outlay	216,431
From:	Unappropriated Designated Funds		
To:	2-20130	Student Wellness Program Supplies and Expense	1,379
To:	2-20650	Southern Hospitality Supplies and Expense	6,035
To:	2-20700	Orientation Programs Supplies and Expense	30,131
To:	2-22100	Historic Southern Indiana Revolving Fund Supplies and Expense	800
To:	2-22250	Saturday School Supplies and Expense	8,516
To:	2-23310	Accounting Department Revolving Fund Supplies and Expense	123
To:	2-25221	Faculty Research-Professor Scheller Supplies and Expense	765

3. Transfer of Funds

From:	1-10000	General Instruction	
To:	3-30900	New Harmony Operations	15,959
From:	1-10100	Academic Affairs	
To:	2-23000	General Instruction Revolving Fund	2,983

From:	1-10900	Extended Services	
To:	2-22000	Extended Services Revolving Fund	6,725
To:	2-22350	Organizational/Professional Development Revolving Fund	48,025
From:	1-10900	Extended Services	
To:	2-22260	English as a Second Language	10,148
From:	2-20050	Student Services Operations	
To:	2-20650	Southern Hospitality Days	694
From:	2-20130	Student Wellness Programs	
To:	2-20100	Student Programs	91
From:	2-20400	Student Publications	
To:	2-20500	Shield	6,448
From:	2-20600	Transitions Yearbook	
To:	2-20400	Student Publications	5,877
From:	2-20750	Study Abroad Program Development	
To:	2-20760	International Programming	549
From:	3-30400	New Harmony Museum Shop	
To:	3-30900	New Harmony Operations	14,237
From:	3-30500	Bookstore	
To:	6-60025	Bookstore Reserve	700,000
From:	3-30698	Athletics Reserve	
To:	3-30601	Athletics Revenue	1,426
From:	3-30700	Athletics Grant-in-Aid	
To:	3-30601	Athletics Revenue	30,000
From:	3-30805	School Age Program 2000	
To:	3-30800	Day Care Center	3,111
From:	3-30810	Kindergarten Camp 2000	
To:	3-30800	Day Care Center	9,252
From:	3-30815	Teenage Camp 2000	
To:	3-30800	Day Care Center	831
From:	1-10200	School of Liberal Arts	
To:	3-32000	Lincoln Amphitheatre 2000	22,290
From:	3-35000	New Harmony Theatre 2000	
To:	3-35001	New Harmony Theatre 2001	9,896
From:	6-60000	Auxiliary System	
To:	3-34500	Miscellaneous Furnishings	85,097

4. Transfer and Appropriation of Funds

From:	1-10100	Academic Affairs	
To:	2-23010	University Core Curriculum	
		Personal Services	7,140
From:	1-16220	University Advancement	
To:	2-20100	Student Programs	
		Supplies and Expense	935

From:	2-20050	Student Services Operations	
To:	1-10270	Psychology	
		Supplies and Expense	810
From:	2-20050	Student Services Operations	
To:	1-10310	Biology	
		Supplies and Expense	500
From:	2-20050	Student Services Operations	
To:	1-10320	Engineering Technology	
		Supplies and Expense	500
From:	2-20050	Student Services Operations	
To:	1-10340	Chemistry	
		Supplies and Expense	230
From:	2-20050	Student Services Operations	
To:	1-14000	Student Affairs	
		Supplies and Expense	1,196
From:	2-20050	Student Services Operations	
To:	1-14020	International Student Services	
		Supplies and Expense	75
From:	2-20050	Student Services Operations	
To:	1-14101	Intramurals and Recreational Sports	
		Supplies and Expense	3,240
From:	2-20120	Multicultural Center	
To:	1-14101	Intramurals and Recreational Sports	
		Supplies and Expense	110
From:	2-20300	Student Government	
To:	1-14101	Intramurals and Recreational Sports	
		Supplies and Expense	110
From:	2-23100	Faculty Development	
To:	1-10170	Honors Program	
		Supplies and Expense	4,500
From:	2-23050	Community of Scholars	
To:	1-10150	Arts Commission General	
		Supplies and Expense	1,000
From:	2-25000	Faculty Research Fund	
To:	2-25316	Faculty Research-Choe	
		Supplies and Expense	55
From:	3-30200	University Center	
To:	1-16240	Special Events	
		Supplies and Expense	1,100
From:	3-33405	Student Housing Association	
To:	1-14101	Intramurals and Recreational Sports	
		Supplies and Expense	30
From:	4-46100	Epi-Hab Center for Disability Studies	
To:	1-10900	Extended Services	
		Personal Services	4,239
To:	1-10910	Continuing Education	
		Personal Services	2,621

From: 4-46344 Texas Instrument Summer Institute
To: 1-10330 Mathematics
Supplies and Expense

976

BUDGET APPROPRIATIONS, ADJUSTMENTS, AND TRANSFERS FOR FISCAL YEAR 2001-02

1. Additional Appropriation of Income

From:	Unappropriated Current Operating Funds		
To:	1-10830	Physical Education Supplies & Expense	477

2. Additional Appropriation of Reserve Funds

From:	Unappropriated Current Operating Reserves		
To:	1-14005	Career Services Supplies & Expense	4,663
From:	Unappropriated Designated Reserves		
To:	2-23010	University Core Curriculum Supplies & Expense	1,772

3. Transfer of Funds

From:	1-10700	School of Business	
To:	2-22350	Organizational/Professional Development Revolving Fund	4,800

4. Transfer and Appropriation of Funds

From:	2-20050	Student Services Operations	
To:	1-10340	Chemistry Supplies & Expense	1,200

BUDGET APPROPRIATIONS, ADJUSTMENTS, AND TRANSFERS FOR FISCAL YEAR 2001-02

1. Additional Appropriation of Income

From: Unappropriated Current Operating Funds
To: 1-10830 Physical Education Supplies & Expense 477

2. Additional Appropriation of Reserve Funds

From: Unappropriated Current Operating Reserves
To: 1-14005 Career Services Supplies & Expense 4,663

From: Unappropriated Designated Reserves
To: 2-23010 University Core Curriculum Supplies & Expense 1,772

3. Transfer of Funds

From: 1-10700 School of Business
To: 2-22350 Organizational/Professional Development Revolving Fund 4,800

4. Transfer and Appropriation of Funds

From: 2-20050 Student Services Operations
To: 1-10340 Chemistry Supplies & Expense 1,200